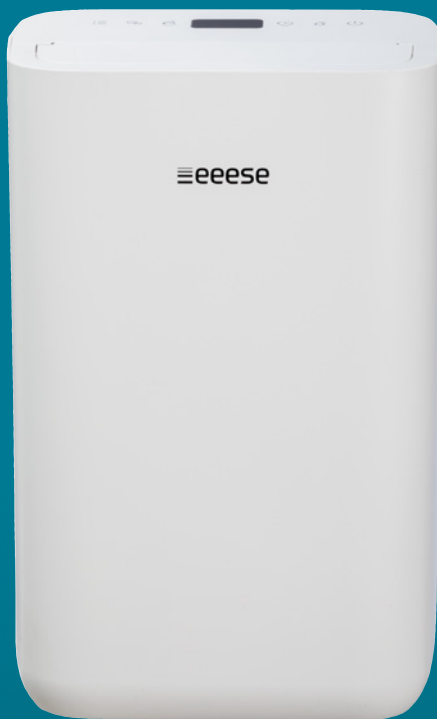


eeese
air care

User manual

Dehumidifier Otto

Art. 2552



Thank you for choosing this product.
Please read this instruction manual before using it.



Please read the user manual before any use, refer to the corresponding section in this user manual. Save it for future reference. We reserve the right for any error in text or images and any necessary changes made to technical data.



Recycle unwanted materials instead of disposing of them. All appliances and packaging should be sorted and tendered at a regional recycling centre and be processed in an ecological manner.



The product conforms to the applicable European and other directives.



Table of Contents

1. Safety Instructions	73
2. Parts List	75
3. Continuous Drainage	76
4. Prior to Operation.....	76
5. Operation Instructions	77
6. Cleaning the dehumidifier	79
7. Cleaning the Air Filter Frame	80
8. Storage	80
9. Trouble Shooting.....	80
10. Technical Specifications	82
11. Service	82
12. Warranty	83
13. Responsible Disposal.....	84
14. Warning on Refrigerant R290.....	84
15. Connection to WIFI.....	85

1. Safety Instructions

Warning

This appliance is intended for use in a domestic environment only. Any other use is not recommended by the manufacturer and may cause fire, electrical shocks or other person injury and property damage. Never try to dismantle or repair the machine yourself. The appliance shall be installed in accordance with national wiring regulations. The machine is designed A-weighted sound pressure level below 70dB. Check the voltage and make sure it meets the technical specification of the machine. This machine can be used by children aged from 8 years and above and persons with reduced physical, sensory or mental capabilities or lack of experience and knowledge if they have been given supervision or instruction concerning use of the appliance in a safe way and understand the hazards involved.



Cautions

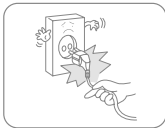


Wet hands not allowed

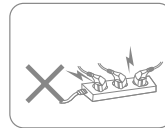


Warning

Power Cord



Do not pull the power cord in order to unplug the device from the socket.



Do not use the appliance in overloaded extension cord.



Do not put any heavy objects on the power cord in order to avoid safety hazard.



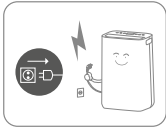
Do not use the appliance if its socket holes cannot firmly hold a plug.



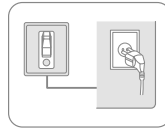
Do not attempt to change the power cord, contact the authorized service centre for repair.



Do not touch the plug with wet hands in order to avoid electric shock.



Unplug the product immediately if it emits strange noises, odours or smoke. Please pull out the plug during lightning storms. Unplug the product when it is not in use.

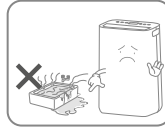


The socket has to be earthed and appropriately secured.

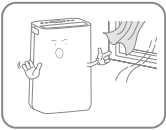
Placement



Do not put flammable and explosive objects around the appliance in order to avoid fire.



Do not use the appliance in swimming pool or similar facilities in order to avoid safety hazard.

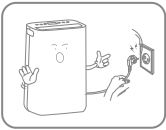


Do not use the appliance in a draughty place or next to a radiator or heating appliance.



Place the appliance on a stable, flat surface. The machine must always stand upright.

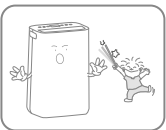
During Use



Before moving the dehumidifier please turn off the power, unplug the power cord and make sure that the water tank is empty



Do not pour water into the appliance in order to avoid malfunction.



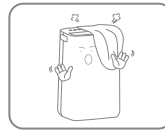
Children shall not play with the machine. Never insert foreign objects into the machine.



Do not put any heavy objects on the appliance in order to avoid malfunction. Never sit on the product.



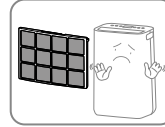
Do not push the appliance over or let the appliance suffer strong impact in order to avoid malfunction.



The appliance must not be covered when being used.



Do not put hands on the air outlet in order to avoid injury or malfunction.

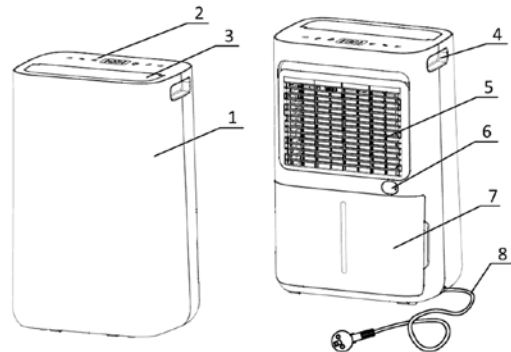


Please install the air filter and make sure it is clean before using it.

2. Parts List

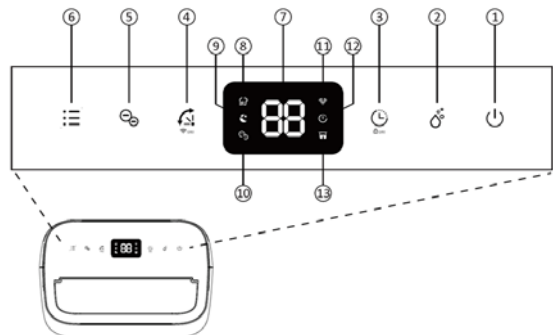
Components

1. Front casing
2. Control panel
3. Oscillating Flaps
4. Handle
5. Air filter frame
6. Continuous drainage outlet
7. Water tank
8. Power cord

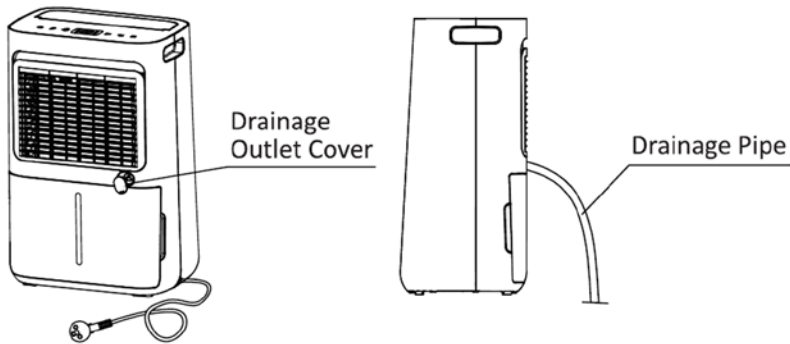


Control panel

1. Power button
2. Manual button
3. Timer- / Child lock button
4. Oscillation- / WiFi button
5. Ionizer button
6. Mode button
7. Humidity display
8. Laundry indicator
9. Sleep mode indicator
10. Ionizer indicator
11. WiFi indicator
12. Timer setting indicator
13. Full tank indicator



Drainage



3. Continuous Drainage

Continuous drainage option allows easy removal of collected water instead of manually emptying from the water tank when the environment is very high humidity.

1. Press Manual button to select the desired humidity value of CO.
2. Remove the rubber plug covering the drain hose connection.
3. Connect a suitable drain hose (14mm inner diameter) through the drainage outlet. Ensure that the hose is secure and tight to prevent leakage.
4. Always make sure the drainage hose is not blocked or obstructed to maintain a smooth flow.



Please always make sure the pipe is going downhill, and is not blocked or kinked.

4. Prior to Operation

- Check the dehumidifier for any transport damages. In case of damage, you should contact our service line immediately.
- Place the dehumidifier in an upright position on a stable, flat surface.
- Make sure that the mains lead is easily accessible and is not damaged by sharp edges or is crushed in any way during use.
- Ensure the dehumidifier is at a safe distance at least 50 cm away from a wall or furniture and has air space on all sides.
- The machine must stand upright for at least 1 hour before it is used for the first time
- If any part of your house suffers from severe humidity, the dehumidifier can be placed there first and then moved to another part of the house later.

- Ensure the supply power is in correspondence with the value on the nameplate and power outlet needs to be grounded.
- Ensure the water tank is correctly fitted before the dehumidifier can be switched on.
- If the dehumidifier is turned off and then turned back on again immediately, it will take approximately 3 minutes to reach full power (compressor back to work).
- If the dehumidifier is switched off by a power cut, it will automatically switch back on once the power is restored.
- The dehumidifier works best at normal room temperature, its efficiency is reduced if the ambient temperature falls to below 15°C.
- Turn on the power and run the machine as per instructions below.

5. Operation Instructions

Switch On / Switch Off The Unit

1. Connect the mains lead to socket.
2. Press **Power button** once to turn on the unit. By default, it runs on Manual Dehumidifying Mode.
3. Press **Power button** once again to turn off the unit.

Humidity Setting Control

Press **Manual button** once to enter Manual Dehumidifying Mode or to select desired level of humidity from CO-30%-35%-40%-45%-50%-55%-60%-65%-70%-75%-80%-CO

Timer Setting

At ON Mode, press **Timer button** consecutively to select your preferred timer duration for automatic shutoff setting. Its corresponding Timer indicator will be displayed on screen.

Oscillating Flaps

Oscillating flap oscillates from different angle for better air circulation and optimal diffusion of the dehumidified air throughout the room.

WIFI Function

Press the **Oscillation button** for 2 seconds to activate the WIFI function and enter into the distribution network mode. During the network configuration, the WIFI indicator flashes and after the WIFI is connected, the icon is on.



See below section Connection to WIFI for detailed settings.
Press the Oscillation button for 2 seconds and you can disconnect to the WIFI.

Built in Ionizer

The unit is equipped with a built in ionizer which produces negative ions to freshen up the air quality and to promote air purification through the elimination of air borne allergens and germs.



If the fan stops working, the ionizer function will automatically be deactivated.

Multifunction optional setting for Laundry & Sleep mode

At manual mode, press the **Mode button** once to enter the **Laundry mode**. Its corresponding laundry indicator will be displayed on screen. The unit works in continuous dehumidification with high fan speed for 6 hours and then it switch off automatically.

At manual mode, press the **Mode button** twice to enter the **Sleep mode**. Its corresponding sleep indicator will be displayed on screen. 10 seconds later, all indicators will be off. At Sleep mode, it operates on low fan speed.



At **Sleep mode**, press any button to wake up the unit and then you can operate the unit as usual.

Safety Childlock Function

To prevent the mishandling by young children, the unit is equipped with a childlock function. Press **Timer button** for 2 seconds to activate or deactivate the childlock function.



After activating the childlock function, the **LC** will be displayed on screen. 3 seconds later the screen will show the current room humidity.

Automatic Shut Off

When the water tank becomes full during normal use, the unit shuts off automatically with **Full tank indicator** on the screen and buzzer alarm goes off for 5 times.



If water tank is removed or not placed properly, above phenomenon will appear also.

Automatic Defrost Feature

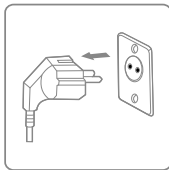
The unit is equipped with an automatic defrost feature. When room temperature drop to 4°C and below, the compressor shuts off and the unit runs on high fan speed setting until the frost has disappeared, no other setting can be made for this feature. Its corresponding indicator "F" will be displayed on screen.

Memory Feature

When recovering from a power failure, the unit will work with the mode prior to the shutdown. It means the timer setting, humidity setting and working mode setting will be kept.

6. Cleaning the dehumidifier

When used regularly, the filter may become clogged with dust and particles. To ensure the effectiveness of the dehumidifier, it is recommended to clean the unit at least every two weeks:



Switch the device off and remove the plug from the socket before cleaning.

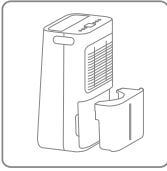


Clean the housing with a soft, dry cloth. Vacuum clean the air inlet and outlet grilles of the dehumidifier. If the device is extremely dirty, use a mild cleaning agent. Wipe the dehumidifier with a slightly damp cloth. Remove the water tank and wash it by hand using a mild detergent. Rinse it with clean water

Note: Do not spray water directly onto the unit.

Cleaning and user maintenance shall not be made by children without supervision.

7. Cleaning the Air Filter Frame



1. Remove the inlet frame from the back.
2. Wash the filter frame carefully in warm water, use a mild detergent if necessary.
Note: DO NOT wash the filter frame in a dishwasher.
3. Rinse the filter frame in clean water and let it dry before reinserting it.
4. Fit the filter frame back onto the unit
Note: DO NOT use the dehumidifier without the Air Filter Frame in place.

8. Storage

If the dehumidifier will not be used for a long period of time, take the following steps:

1. Remove the plug from the socket and empty the tank, make sure the tank and the dehumidifier is completely dry. This may take a couple of days.
2. Clean the air filter.
3. Check the dehumidifier for perfect condition to ensure a safe use of it after a long period of storage.
4. Pack the device with the suitable packaging.
5. Store the dehumidifier in a dust-free location, and out of direct sunlight. Preferably covered with a sheet of plastic.

9. Trouble Shooting

Check the following before contacting technical support .

PROBLEM	POSSIBLE CAUSE	SOLUTION
The dehumidifier will not switch on	The power is not connected	Insert the plug into the wall outlet and make sure the power is on
	The water tank is full	Empty the tank
	The tank has not been replaced correctly	Replace the tank
	The set humidity level has been reached	Lower the humidity level
	Power plug or cord damaged	Contact an authorized service centre for repair

Water removal capacity is too low	Runtime is too short	Be patient and wait
	Ambient temperature or humidity is too low	It is normal that the device does not dehumidify in these conditions
The device works, but reduces the relative humidity insufficiently	The room is too big	We recommend using a dehumidifier with a greater capacity
	There is too much ventilation	Reduce ventilation (e.g. close windows and shut doors)
	The air filter is clogged	Clean the air filter
	The humidity is higher than the ambient humidity	Set the humidity lower than ambient humidity
The humidity is not reducing	The dehumidifier has not been used long enough	
	The ambient temperature is too low	
	The surrounding humidity level is too low	
	The ambient humidity level is lower than the desired humidity level set	
	The air filter frame is dirty	Clean the filter frame
Dehumidifier is blowing out warm air	The dried air is passed over heating coils before it is blown into the room as part of the dehumidifying process	This is normal, a dehumidifier is not an air cooler
Water on floor	There is residual water in tank, and the device is lurched too much by moving	Be careful when moving the tank
Water in tank overflows	The water tank may be damaged.	Contact our eeese service line
	Float for water auto-sensor is not in place	
	Internal drainage passage is blocked or obstructed	
The dehumidifier is noisy	The air filter is blocked or the device is on an uneven surface	Clean the filter or put the device on a flat surface
	Loose or foreign particles inside the unit	Contact our eeese service line
	Sound of flowing refrigerant	
Error code	E1: Temperature sensor error E2: Humidity sensor error	Contact our eeese service line

10. Technical Specifications

Model Otto Art. no		2552
Max. working area m ²		60
Recommended working area m ²		4-50
Wifi		Yes
Timer		1 ~ 24 h
IP code		IPX4
Power Supply		220-240V - 50Hz
Dehumidifying Capacity		13 L/day (30°C RH 80%)
		7 L/day (27°C RH 60%)
Power Consumption		145 W
Air Volume m ³ /h	High	95
	Low	70
Noise Level dB(A)	High	39
	Low	35
Water Tank Capacity		2.3 L
Operating Temperature		5~35°C
Refrigerant		R290 / 0.045kg
Compressor		Reciprocating
Net Weight		10,3 kg
Filter		Washable
Drain Hose Diameter mm		14
Drain hose included (Art. 2558)		No
Product Size (WDH)		308 × 209 × 445 mm

The above technical data are for reference only. We reserve the right to modify them without notice.

11. Service

If you have any questions or need more information, please feel free to call

eeese customer service on +45 69 16 32 00

If you need service or to make a warranty claim, you must create a case directly in our support system. Go to the website under SUPPORT.

12. Warranty

Limited warranty

We guarantee that all parts are free of defects in materials and workmanship for a period of two years from the date of purchase. The warranty covers only material or manufacturing defects that prevent the product from being able to be installed or operated in a normal way. Defective parts will be replaced or repaired.

The warranty does not cover transportation damage, any use other than what is intended, damage caused by incorrect assembly or improper use, damage caused by impact or other error, or by improper storage.

The warranty becomes void if the user modifies the product.

The warranty does not include product-related damage, property damage or general operational loss.

The manufacturer's liability cannot exceed the repair or replacement of defective parts and does not include labour costs to remove and reinstall the defective part, transportation costs to and from the service center, and all other materials necessary to carry out the repair.

This warranty does not cover failure or malfunction as a result of the following:

- Lack of proper installation, operation or maintenance of the unit in accordance with our published "User's Guide" supplied with the unit.
- The workmanship of any installation of the unit.
- Misuse, alteration, accident, fire, flood, lightning strike, rodents, insects, negligence or unforeseen events.
- Use of non-factory authorised parts or accessories in conjunction with the product.

Limitation of liability

This is the only warranty provided by the manufacturer. No one is authorised to make any other warranties on our behalf.

This warranty is in lieu of all other warranties, expressed or implied, including but not limited to any implied warranty of fitness for a particular purpose and saleability. We expressly disclaim all liability for consequential damage, accidental damage, indirect loss or loss related to a breach of the expressed or implied warranty.

This warranty gives you specific legal rights, which may vary by country.

Complaints

In the event of any warranty claim a valid purchase receipt must be presented. Read about raising a warranty-claim under the SERVICE section.

IMPORTANT!

If you need technical help – contact our eeese service line:

eeese DK-telephone +45 69 16 32 00

We have specialist knowledge of our products and the field in general, so you can get help quickly and easily.

13. Responsible Disposal

This symbol indicates that this product should not be disposed of with general household waste. This applies throughout the entire EU. In order to prevent any harm to the environment or health hazards caused by incorrect waste disposal, the product must be handed in for recycling so that the material can be disposed of in a responsible manner. When recycling your product, take it to your local collection facility or contact the place of purchase. They will ensure that the product is disposed of in an environmentally sound manner.



14. Warning on Refrigerant R290

The machine is designed only for use with R290(propane) gas as the designated refrigerant.

Note: The refrigerant loop is sealed. Only a qualified technician should attempt to service.



The lack of smell does not indicate a lack of escaped gas. No open flames, cigarettes or other possible sources of ignition should be used in the vicinity of the machine. Component parts are designed for propane and non-incentive and non-sparking. Component parts shall only be replaced with identical repair parts.

Note: The machine may only be installed in a room with a minimum floor area of 4m².

R290 is a flammable gas that is heavier than air. On this basis, if the gas leaks from the unit, the concentration will be the highest at ground level. However, the gas can be lifted (e.g. by draught, fan, etc) to higher levels. The R290(propane) used in this unit has no odour. Do not use the machine in a room with an open flame, other high-level heat sources (e.g. cigarettes, candles, etc.) or electrical discharges. Install the machine in a room which can be ventilated when necessary and where gas accumulation is not possible. If R290(propane) is detected in the room, or a leak is suspected, do not allow unauthorized persons to search for the source of the leak. In such cases, evacuate all people from the room, open the windows, leave the room and notify your local fire department to advise them that a propane leak has occurred. Do not allow any person to return to the room until the commanding officer of the fire department or a certified service engineer decides that the risk has ceased to exist.

15. Connection to WIFI

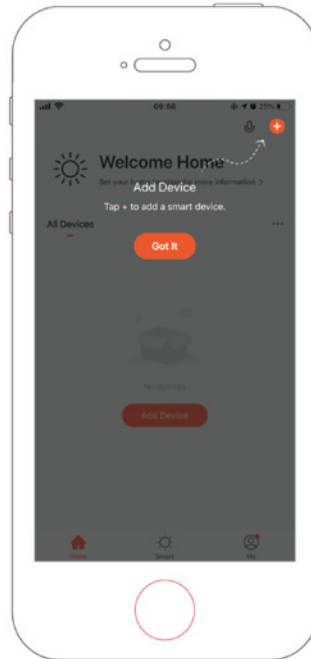
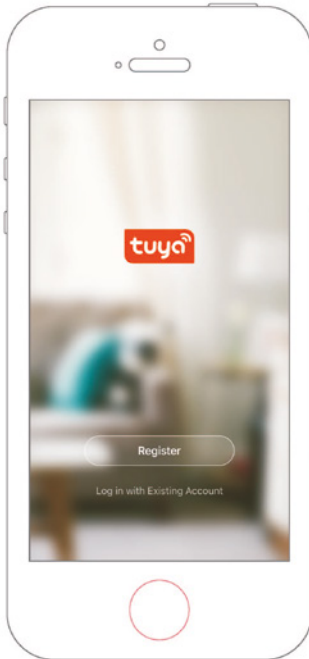
App binding device

Search for the App **TuyaSmart** or scan the following QR code for downloading the APP.



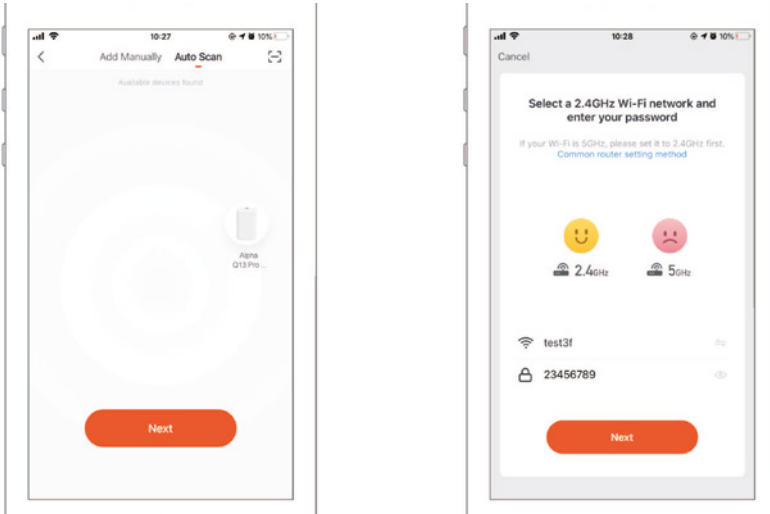
Step 1

Make sure your phone is connected to your WIFI at home, and turn on Bluetooth. Tap the **+** in the upper right corner of the home page to add the device.



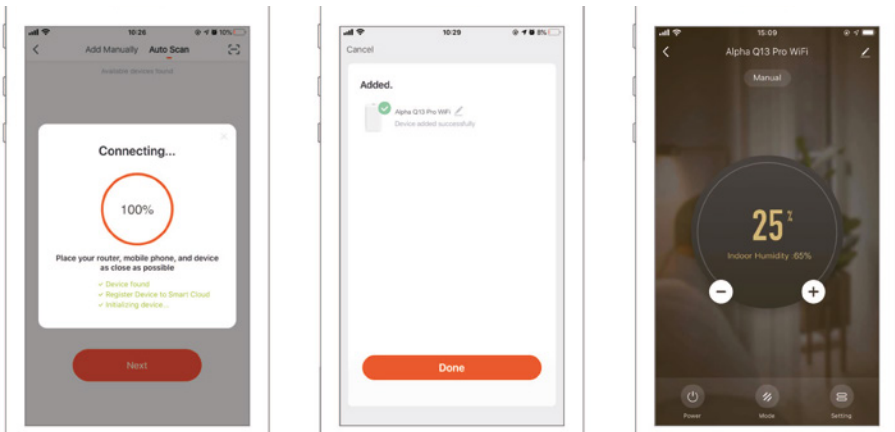
Step 2

Follow the guide to select the device to be configured and then enter the WIFI password.



Step 3

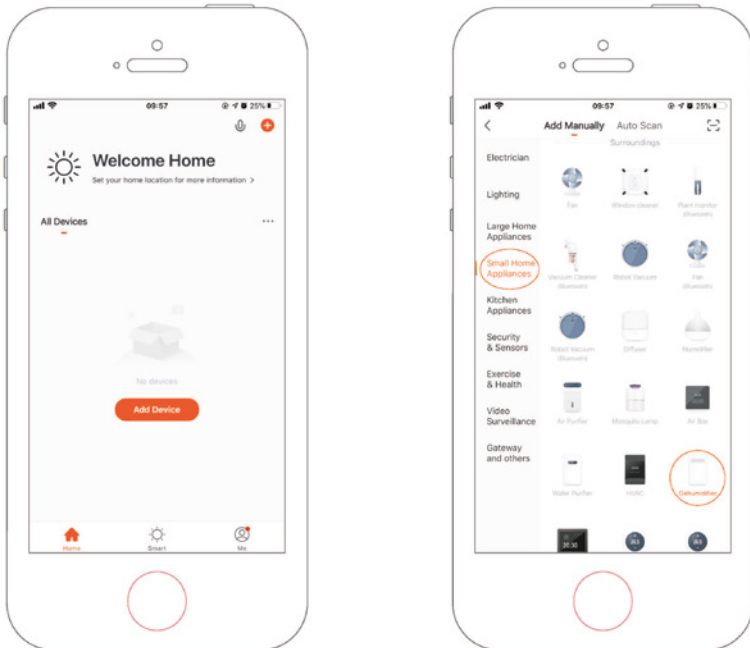
Complete the connection to set the dehumidifier with the App.



Adding device manually

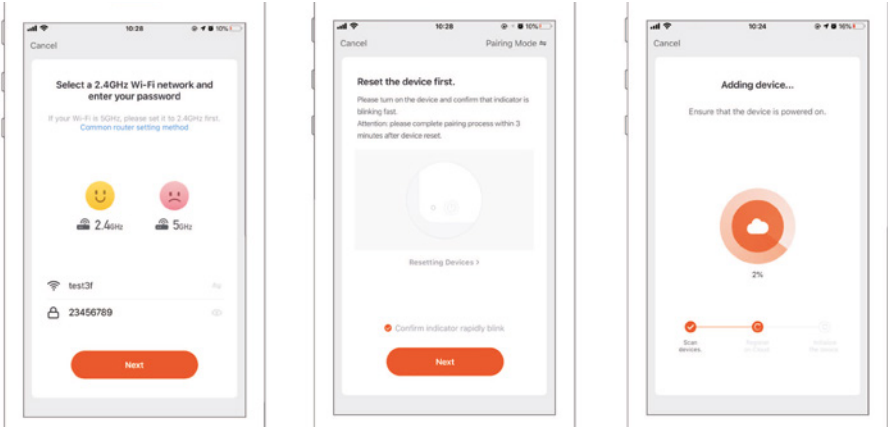
Step 1

Tap **Add Device** on the home page or tap the **+** in the upper right corner, to go to the Add device page.



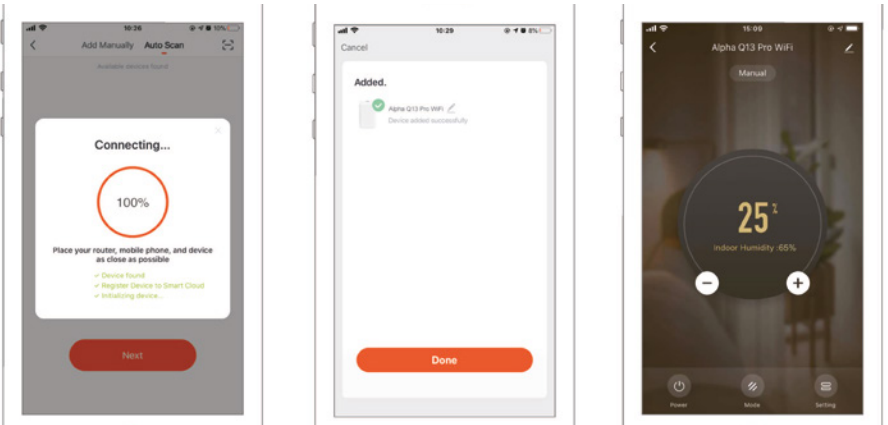
Step 2

Confirm the indicator rapidly blink and enter the WIFI password.



Step 3

Complete the connection to set the dehumidifier with the App.





Thank you for choosing this product.
Please read this instruction manual before using it.