

OIL HEATER

Model:
HOH-YD11WH



This product is only suitable for well insulated spaces or occasional use!

- LED Display
- Remote control
- Power: 2500W

HEINNER

1. SAFETY MEASURES

Keep the manual in a safe place for future reference, along with the completed warranty card, purchase receipt and carton. If applicable, pass these instructions on to the next owner of the appliance. Always follow basic safety precautions and accident prevention measures when using an electrical appliance, including the following:

Electrical safety and cord handling

WARNING: PLEASE READ THIS INSTRUCTION MANUAL CAREFULLY BEFORE USE

When using an electrical appliance, basic safety precautions should always be observed, including the following:

1. This appliance is not intended for use by persons (including children) with reduced physical, sensory or mental capabilities, or lack of experience and knowledge, unless they have been given supervision or instruction concerning use of the appliance by a person responsible for their safety.
2. Children should be supervised to ensure that they do not play with the appliance.
3. Connect the appliance to single phase AC supply of the voltage specified on the rating plate.
4. In order to avoid overheating, do not cover the heater.
5. Never leave the heater unattended while it is in use. Always turn the product to the OFF position and unplug it from the electrical outlet when not in use.
6. Extreme caution is necessary when any heater is used by or near children, reduced physical, sensory or mental capabilities or elderly person and whenever the heater is left operating and unattended.
7. The heater must not be located immediately below an electrical socket-outlet.
8. Do not run cord under carpeting and do not cover cord with throw rugs, runners or the like. Arrange cord away from traffic area and where it will not be tripped over.
9. Do not operate the heater with a damaged cord or plug, or after the heater malfunctions, has been dropped, or damaged in any manner.
10. If the supply cord is damaged, it must be replaced by the manufacturer or its service agent or a similarly qualified person to avoid a hazard.
11. Avoid the use of an extension cord as this may overheat and cause a risk of fire.
12. Use the heater in a well-ventilated area. Do not insert or allow objects to enter any ventilation or exhaust opening. To prevent a possible fire, do not block air intakes or exhaust openings in any manner. Do not use on soft surfaces, like a bed, where openings may become blocked. Use the heater on flat, dry surfaces only.
13. Do not place this heater near flammable materials, surfaces or substances, as there may be a risk of fire. Keep the above flammable materials, surfaces or substances at least 1m from the front of the product and keep them away from the sides and rear.
14. Do not use the heater in any areas where petrol, paint or other flammable liquids are stored e.g. Garages or workshops as a hot, arcing or sparking parts inside the heater.
15. Don't use this heater in the immediate surroundings of a bath, a shower or a swimming pool. Never locate the heater where it may fall into bathtub or other water container.
16. This heater is hot when in use. To avoid burns and personal injury, do not let bare skin touch hot surfaces. If provided, use handles when moving the product.
17. Be sure that no other appliances are in use on the same electrical circuit as your product as an overload can occur.
18. This heater is filled with a precise quantity of special oil.
19. Repair requiring opening of the oil container are only to be made by the manufacturer or its service agent who should be contacted if there is an oil leakage.
20. Regulations concerning the disposal of oil when scrapping the appliance have to be followed.
21. The heater should not be used in a room, of which the floor area is less than 5 M².
22. The cord shouldn't be placed nearby the hot surface of the appliance.
23. Indoor household use only


24. **NOTE:** It is normal when the heaters are turned on for the first time or when they are turned on after having not been used for a long period of time the heaters may have noise inside, This will disappear when the heater has been on a short while.

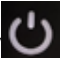
Safety features

1. Your heater is equipped with a Tip-Over Safety Switch. When your heater tips over, it will turn off automatically.
2. Your heater is equipped with an Overheat Protection System. When the threshold temperature has been reached, your heater will turn off automatically.
3. To reset your heater when the overheat Protection System has been activated, perform the following:
4. Turn the Power Control Switch to the 'OFF' position and turn the Temperature Control Switch to the lowest setting.
5. Disconnect the power cord from the electrical outlet.
6. Allow your heater to cool down for approximately ten minutes.
7. Connect the power cord to the electrical outlet.
8. Turn the Power Control Switch to the 'HIGH' position and turn the Temperature Control Switch to the highest setting.
9. If your heater does not operate normally, turn the Power Control Switch to the "OFF" position, disconnect the power cord from the electrical outlet, and consult an authorized repair technician.

2. USING THE PRODUCT



When the device is powered on, the buzzer beeps and the power indicator lights up “”, (Standby mode).

On-Off key “”:

Press the button to start the machine and display the ambient temperature. At the same time, the indicator light of the first gear will turn on (one LED light), and press again to shut down.

Heat setting button “”:


Every time you press it, the gear shifts from 1st gear, 2nd gear and 3rd gear. After the setting is completed, the corresponding gear indicator light will turn on. The 1st gear indicator lights up (1 LED light), 2nd gear indicator lights up (2 LED lights), 3rd gear indicator lights up (3 LED lights).

Gear 1, one indicator, on the left of display;

Gear 2, two lights, on the right;

Gear 3, three lights, in the middle.

Temperature "+" and "-" button:

Press the "+" "-" key to enter the automatic temperature control mode and set the target temperature, 15-35°C. After the setting is complete, the ambient temperature will be displayed after blinking for 3 seconds (press +/- to view the setting temperature, and then press to operate). After entering the temperature control mode, the temperature control indicator will be on. "  ".

Timer button "  ":

This time is a scheduled shutdown. In the startup state, press "00" for the first time and "01" for the second time, increasing by one hour each time until "00" is displayed again after "24". After the timing operation is complete, the ambient temperature is displayed blinking for 3 seconds (Press the timing button to view the timing time). At this time, the timing screen "h" is on. The timing is up to the shutdown action (when setting the timing, press +/- to increase or decrease the timing when the time flashes).

Controls on remote control

POWER: press this button after plug in to power on the Heater and press the on-off button on the side, and start operation, or press it repeatedly to stop operation and set the heater into standby mode.

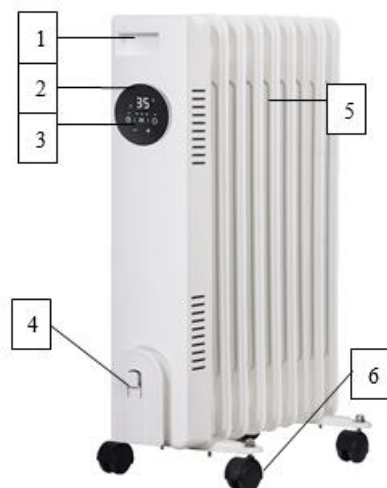
MODE: use this button to set the power level.

TIMER: use this button to set the timer.

[+] and [-]: use these buttons when setting the desired temperature, or for setting the timer.



3. PRODUCT DESCRIPTION

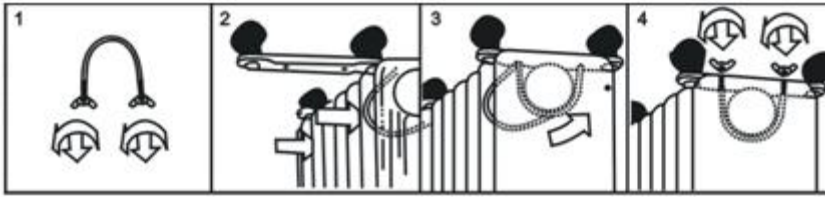


1.	Carry handle
2.	Display
3.	Control panel
4.	Power cord storage
5.	Radiant fins
6.	Castors

Assembly instructions

The heater is packaged with the feet unattached. You must attach them before operating the heater.

WARNING: Do not operate without feet attached. Do operate the heater only in upright position (feet on the bottom, controls on the top), any other position could create a hazardous situation



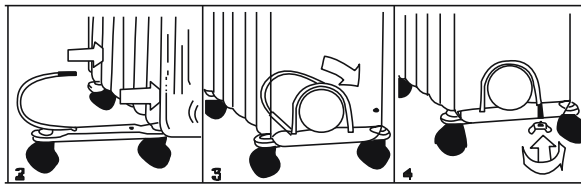
1. Place the radiator body upside-down on a scratch-free location, make sure it is stable and will not fall.
2. Screw off the wing nuts from the U-shaped bolt provided, attach the U-shaped bolt to the U-facing flange between first and second fins (near the front cover).
3. To attach the castor mounting plate to the radiator body, you should insert the threaded ends of the U bolt in the holes on the castor mounting plate.
4. Screw the wing nuts back to the U bolt and fasten the wing nut properly.

Note: do not over tighten, which may cause the damage of radiator flange.

5. Screw off spherical nut from the castor, align the shaft to the hole of the castor mounting plate, insert in, and screw on the spherical nut.

6. Repeat 2, 3, 4 and 5 on the rear of radiator for mounting of the rear castors.

Note: the rear castors must be mounted between the end two fins.



4. CLEANING AND MAINTENANCE

1. Press Power Button to turn off the heater.
2. Disconnect the power cord from the electrical outlet and wait until the unit cool down.

Off-season storage instructions:

1. Secure the power cord, and place your heater in its original shipping container, or a similar container.
2. Store the container in a cool, dry location.
3. Take out the remote batteries (to prevent corrosion) as shown below. Store the remote in a safe place.

Maintenance

1. Always remove the plug from the socket-outlet and allow the radiator to cool down before cleaning the heater.
2. Wipe the radiator with a soft damp (not wet) cloth.
3. To store away the heater, wind the cable round bobbin and store the heater in a clean dry place.
4. In case of malfunction or doubt, do not try to repair the radiator yourself, it may result in a fire hazard or electric shock.

WARNING:

Do not immerse the heater in water.

Do not use any cleaning chemicals such as detergents and abrasives.

Do not allow the interior to get wet as this could create a hazard.

CUSTOMER CARE AND SERVICE

Always use original spare parts.

When contacting our Authorised Service Centre, ensure that you have the following data available: Model and Serial Number.

The information can be found on the rating plate. Subject to change without notice.

5. TECHNICAL DATA

11 fins: 1000W/1500W/2500W

Fin size: 120x550mm

Color: white

Model identifier(s): HOH-YD11WH					
Item	Symbol	Value	Unit	Item	Unit
Heat output			Type of heat input, for electric storage local space heaters only (select one)		
Nominal heat output	Pnom	1,0975	kW	manual heat charge control, with integrated thermostat	NA
Minimum heat output (indicative)	Pmin	0,7654	kW	manual heat charge control with room and/or outdoor temperature feedback	NA
Maximum continuous heat output	Pmax, c	1,0975	kW	electronic heat charge control with room and/ or outdoor temperature feedback	NA
Auxiliary electricity consumption				fan assisted heat output	NA
At nominal heat output	elmax	NA	kW	Type of heat output/room temperature control (select one)	
At minimum heat output	elmin	NA	kW	single stage heat output and no room temperature control	No
In standby mode	eISB	NA	kW	Two or more manual stages, no room temperature control	No
				with mechanic thermostat room temperature control	Yes
				with electronic room temperature control	No
				electronic room temperature control plus day timer	No
				electronic room temperature control plus week timer	No
				Other control options (multiple selections possible)	
				room temperature control, with presence detection	No
				room temperature control, with open window detection	No
				with distance control option	No
				with adaptive start control	No
				with working time limitation	No
				with black bulb sensor	No
Contact details	Importer: Network One Distribution Marcel Iancu Street, 3-5, Bucharest, Romania Tel: +40 21 211 18 56, www.heinner.com, www.nod.ro				

Thank you for purchasing this product. If you need support with your product, visit our website using the links below.

Get User manuals: <https://www.heinner.ro>

Get Service information: <https://www.heinner.ro>



Environment friendly disposal

You can help protect the environment!

Please remember to respect the local regulations: hand in the non-working electrical equipment's to an appropriate waste disposal center.



HEINNER is a registered trademark of **Network One Distribution SRL**. Other brands and product names are trademarks or registered trademarks of their respective holders.

No part of the specifications may be reproduced in any form or by any means or used to make any derivative such as translation, transformation, or adaptation without permission from NETWORK ONE DISTRIBUTION.

Copyright © 2013 Network One Distribution. All rights reserved.

www.heinner.com, <http://www.nod.ro>



This product is in conformity with norms and standards of European Community.



Importer: **Network One Distribution**

Marcel Iancu Street, 3-5, Bucharest, Romania

Tel: +40 21 211 18 56, www.heinner.com , www.nod.ro